



Usable Area



Floor Common Area

Usable Area = 318.79 m<sup>2</sup>

Floor R/U Ratio = 8.70%

Floor Rentable Area\* = 346.52 m<sup>2</sup>

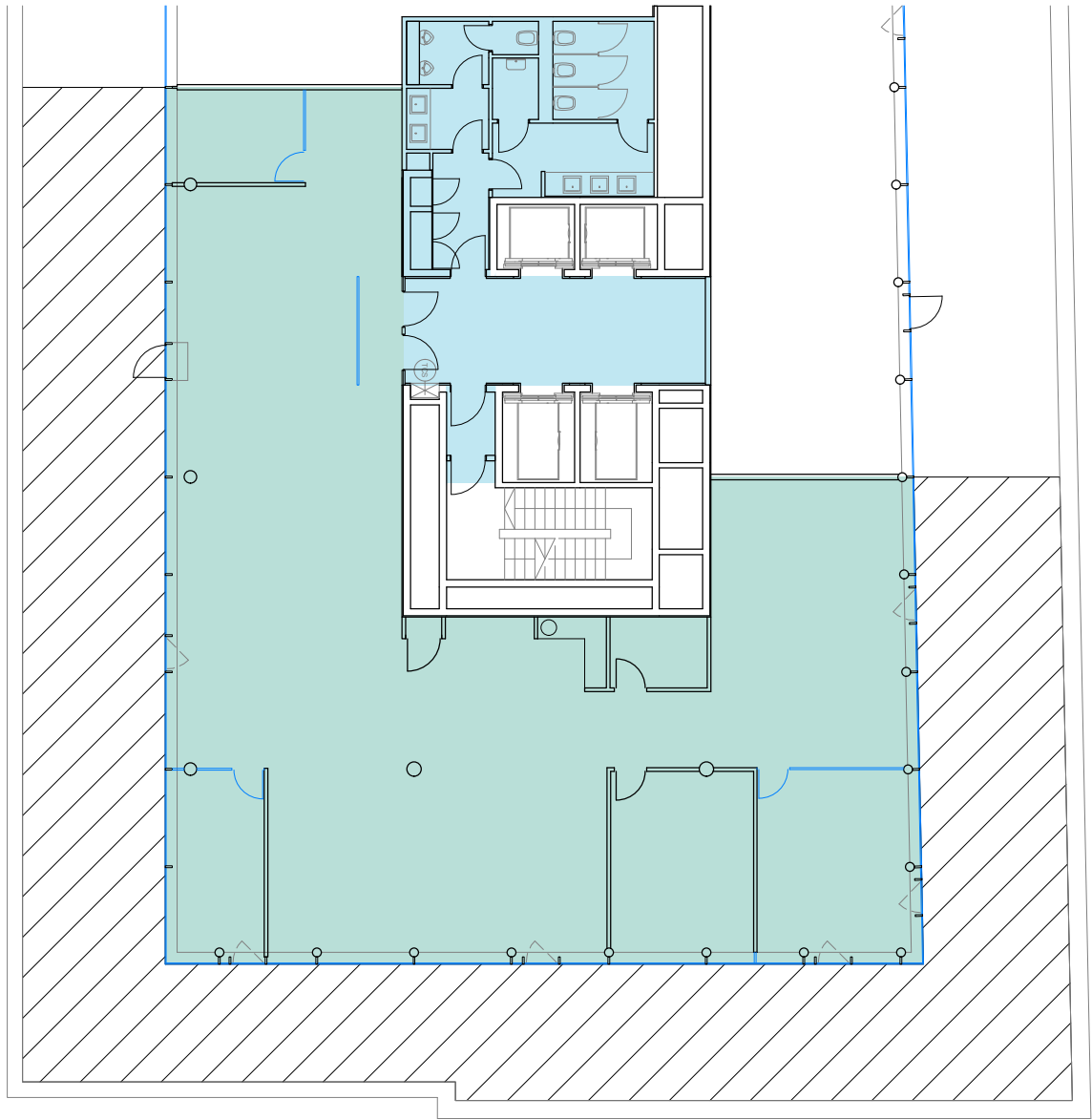
Building Ratio = 5%

**Rentable Area\*\* = 363.85 m<sup>2</sup>**

\*Floor Rentable Area = Usable Area x Floor R/U Ratio  
\*\*Rentable area = Floor Rentable Area x Building Ratio  
\*\*\*All data calculated according to BOMA 2017



Finished Rooftop Terrace  
254 m<sup>2</sup>



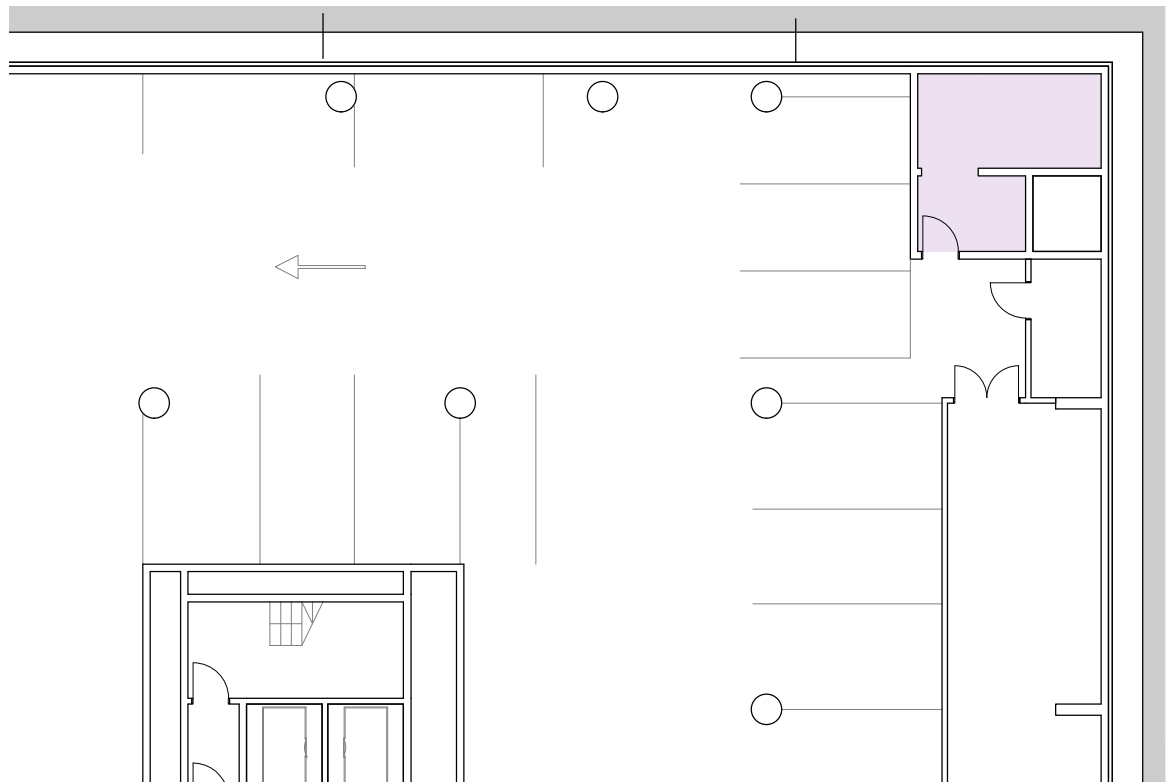
6<sup>th</sup> FLOOR



Storage Net Area = 18.20 m<sup>2</sup>

**Rentable Area\* = 18.20 m<sup>2</sup>**

\* Building R/U Ratio is not applicable  
\*\* All data calculated according to BOMA 2017



P4 LEVEL

TERÉZ KRT.

