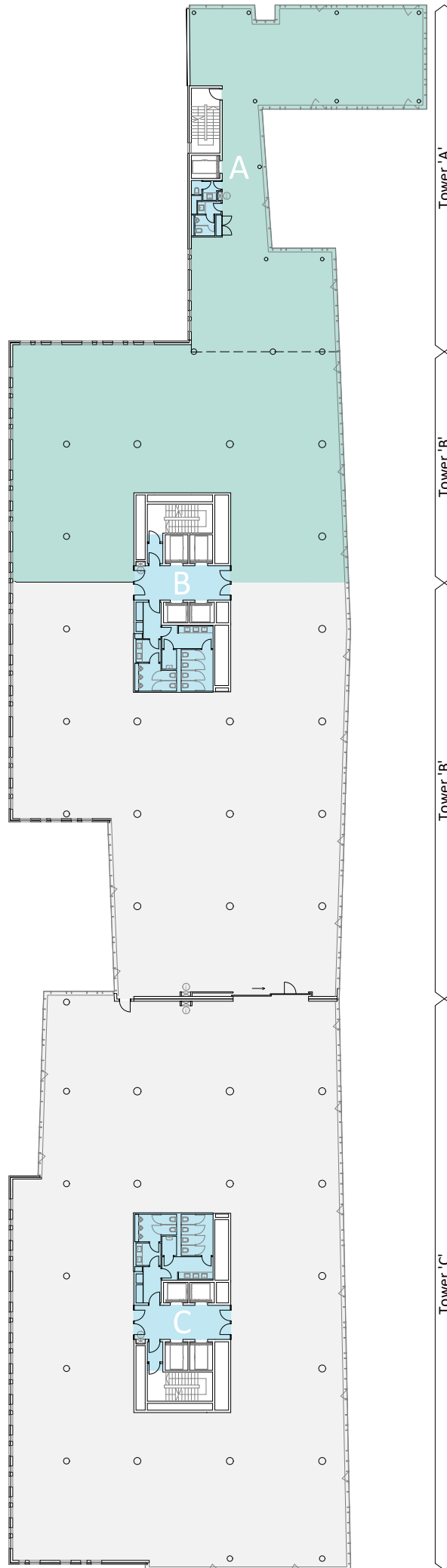
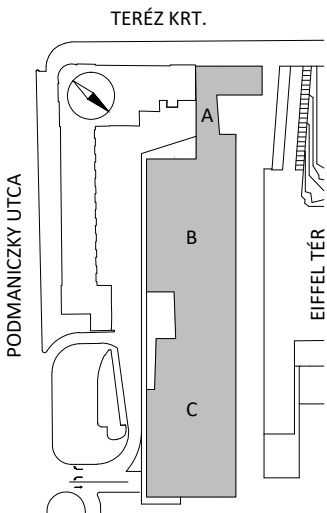


Available Area
Usable Area = 879.26 m²
Floor Rentable Area = 921.83 m²
Rentable Area = 967.92 m²

Rented Area

Floor Common Areas



Tower 'A'

Tower 'B'

Tower 'B'

Tower 'C'

Usable Area = 347.14 m²
Floor R/U Ratio = 3.85%
Floor Rentable Area* = 360.51 m²
Building R/U Ratio = 5%
Rentable Area = 378.54 m²**

*Floor Rentable Area = Usable Area x Floor R/U Ratio
**Rentable area = Floor Rentable Area x Building Ratio
***All data calculated according to BOMA 2017

Usable Area = 532.12 m²
Floor R/U Ratio = 5.49%
Floor Rentable Area* = 561.32 m²
Building R/U Ratio = 5%
Rentable Area = 589.39 m²**

*Floor Rentable Area = Usable Area x Floor R/U Ratio
**Rentable area = Floor Rentable Area x Building Ratio
***All data calculated according to BOMA 2017

Usable Area = 842.40 m²
Floor R/U Ratio = 5.49%
Floor Rentable Area* = 888.63 m²
Building R/U Ratio = 5%
Rentable Area = 933.06 m²**

*Floor Rentable Area = Usable Area x Floor R/U Ratio
**Rentable area = Floor Rentable Area x Building Ratio
***All data calculated according to BOMA 2017

Usable Area = 1262.68 m²
Floor R/U Ratio = 5.97%
Floor Rentable Area* = 1338.11 m²
Building R/U Ratio = 5%
Rentable Area = 1405.02 m²**

*Floor Rentable Area = Usable Area x Floor R/U Ratio
**Rentable area = Floor Rentable Area x Building Ratio
***All data calculated according to BOMA 2017

3rd FLOOR