



EIFFEL SQUARE
OFFICE BUILDING

GROUND FLOOR

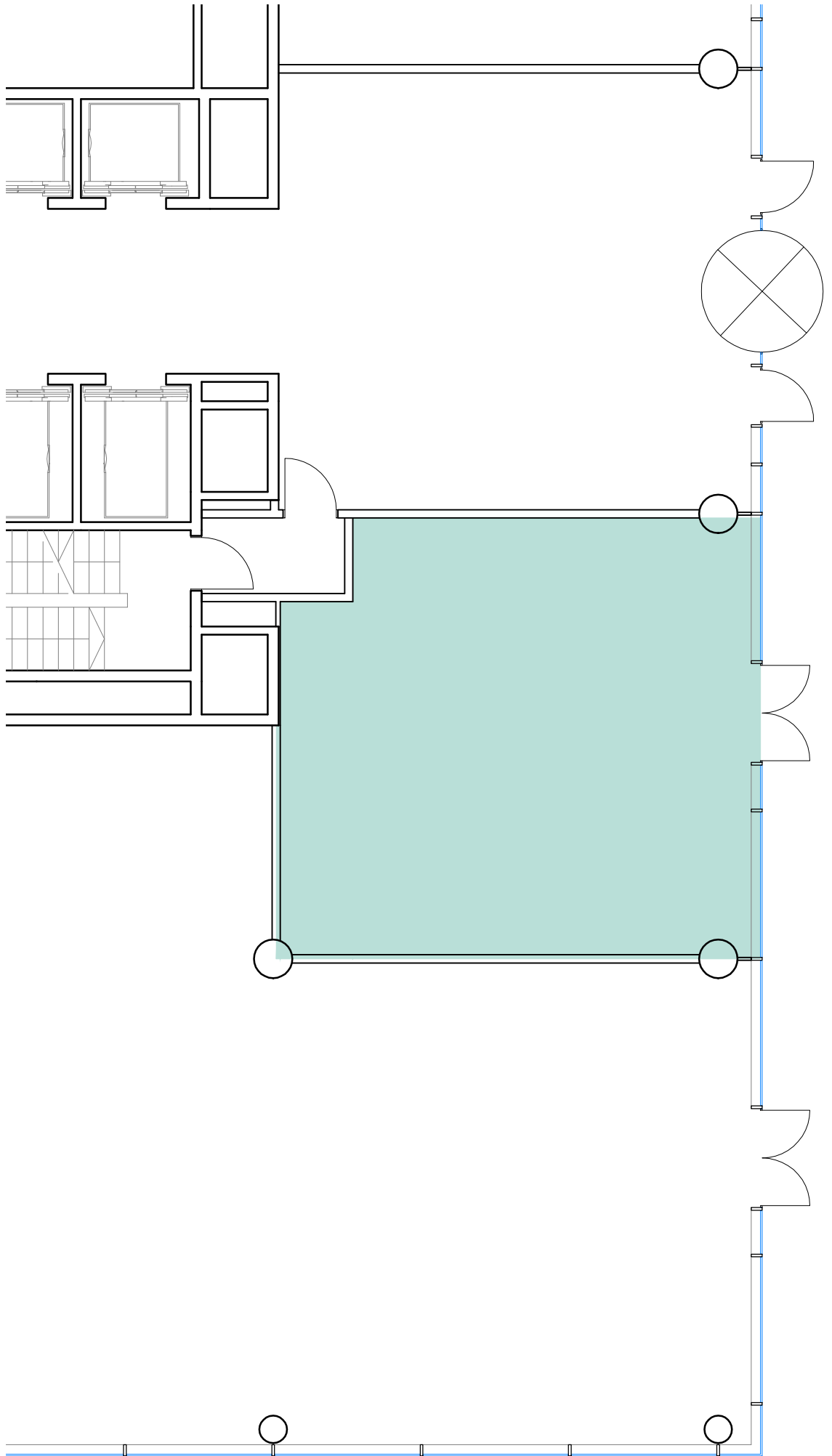


Usable Area = 68.44 m²

Building R/U Ratio = 5%

Rentable Area* = 71.86m²

* Rentable area = Usable Area x Building R/U Ratio
** All data calculated according to BOMÁ 2017



GROUND FLOOR

TERÉZ KRT.

